

We are proud to present our **brand new workshop** programme for Spring 2026
Everyone is made most welcome especially those new to the ASA workshop experience.
 We look forward to welcoming you to your next workshop! *Leslie and Ruth altyartists@gmail.com*

Saturday workshops bookable from 15th December



Pastel portraits

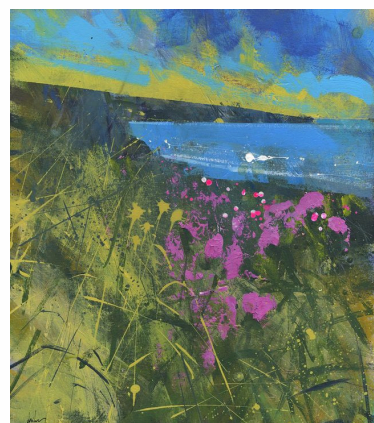
Leslie Robinson

Sat 17th Jan

10.30-3.30

£25

Many people say that they find pastels difficult, that they struggle with portraits and that they don't know how to choose colours. We will explore all these issues in this workshop, working on the basic principles in the morning and applying what we've learnt to a loose soft pastel portrait in the afternoon.



Semi- abstract seascapes in acrylic

Paul Bailey

Sat 21st Feb

10.30-3.30

£35

Paul will demonstrate his semi-abstract approach to seascape painting and explain his dynamic compositional colour strategies to express the mood, movement and drama of the Welsh coast. You can see more of Paul's work here <https://paulbaileyart.co.uk/>

Saturday workshops bookable from 16th February



Watercolour landscapes

Paul Talbot-Greaves

Sat 7th March

10.30-3.30

£35

Learn how to control watercolour consistencies to create depth, contrast and rich colour in a landscape painting. You'll investigate the 3-layering technique to achieve values, which will give your paintings a fresh and bold appearance. The day will begin with an introduction to achieving values followed by a demonstration, after which you will have the opportunity to create your own painting with Paul's assistance. <https://www.talbot-greaves.com/>



Still life

Gillian Hamilton

Sat 18th April

10.30 - 3.30

£25

A short demonstration with emphasis on setting up, lighting and successful composition, followed by a guided workshop creating your own painting.

You will be asked to bring your own objects for painting so this image is for illustration purposes only.

To book, contact Ruth at altyartists@gmail.com **on or after the published booking date**